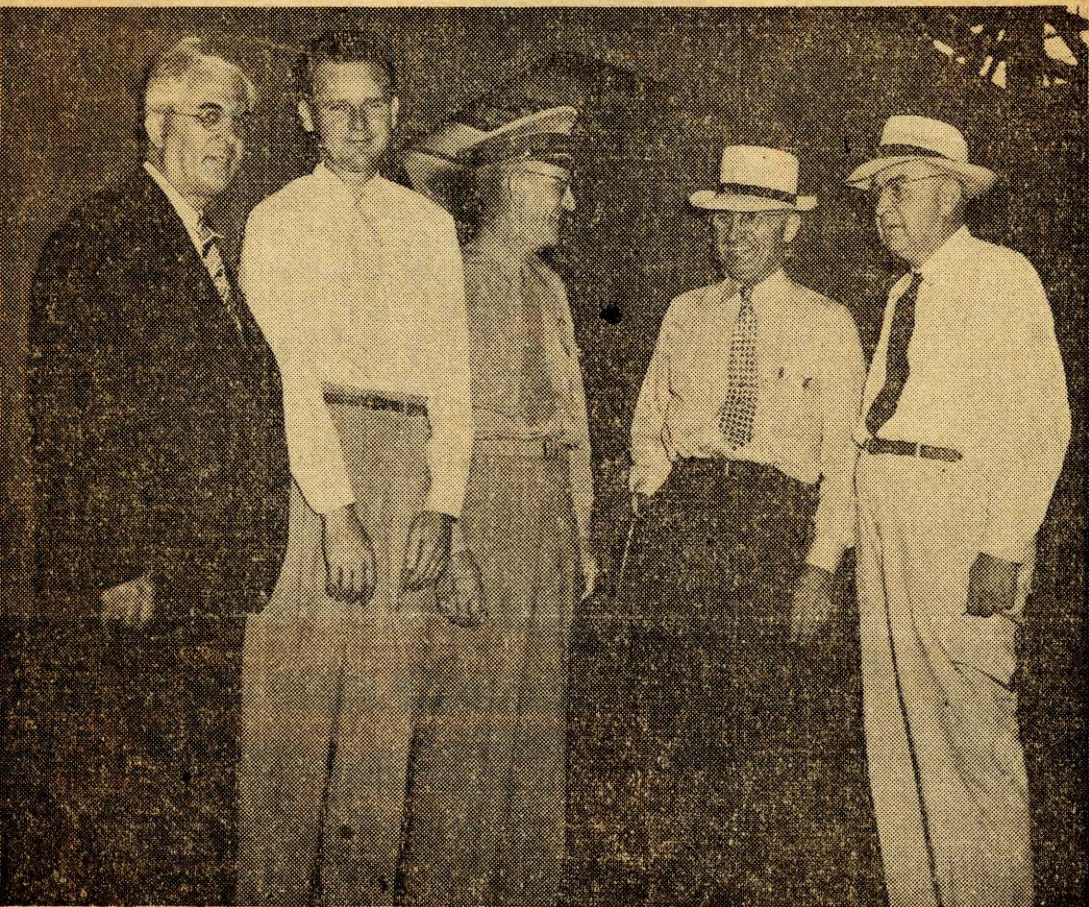


# TRUMAN COMMITTEE VISITS PLANTS HERE



MEMBERS of the Truman Senate investigation committee made a whirlwind courtesy inspection visit this morning of Beech and Cessna aircraft factories. The committee was able to accept special invitations to visit the plants because they were running ahead of schedule. Pictured above are members of the Truman committee standing beside a plane at Cessna Aircraft company plant, left to right: Sen. Homer Ferguson, of Michigan; Dwight S. Wallace, executive vice president and treasurer of Cessna; Brig. Gen. Ray G. Harris, supervisor of the Midwest procurement district, army air forces, Wichita; Sen. Harry S. Truman, committee chairman, Missouri and Sen. Harry Kilgore of West Virginia.

Wichita Eve. Eagle 8-11-43